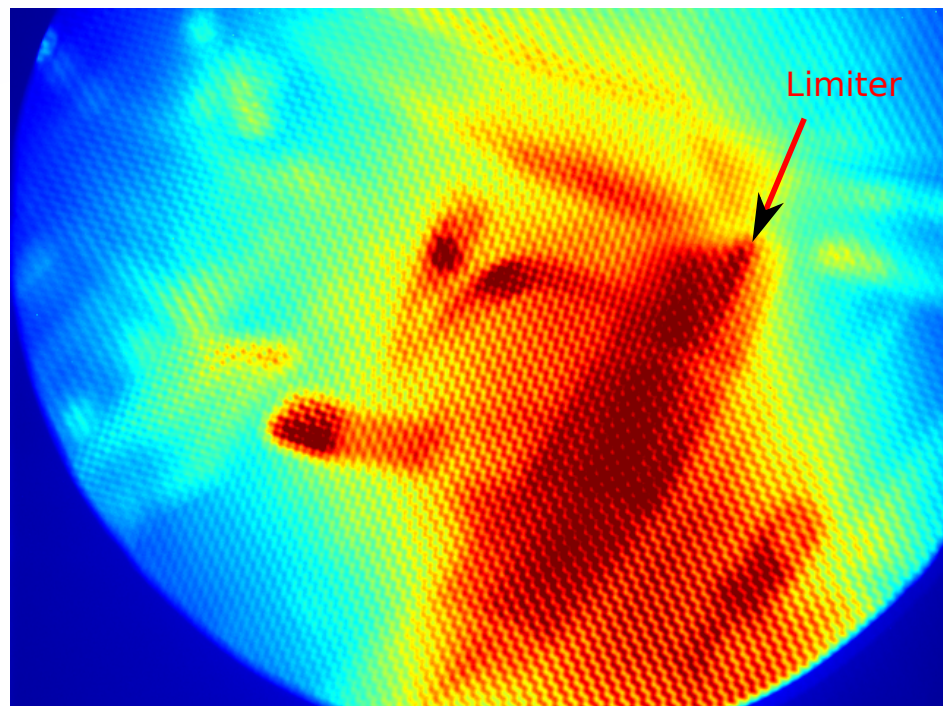
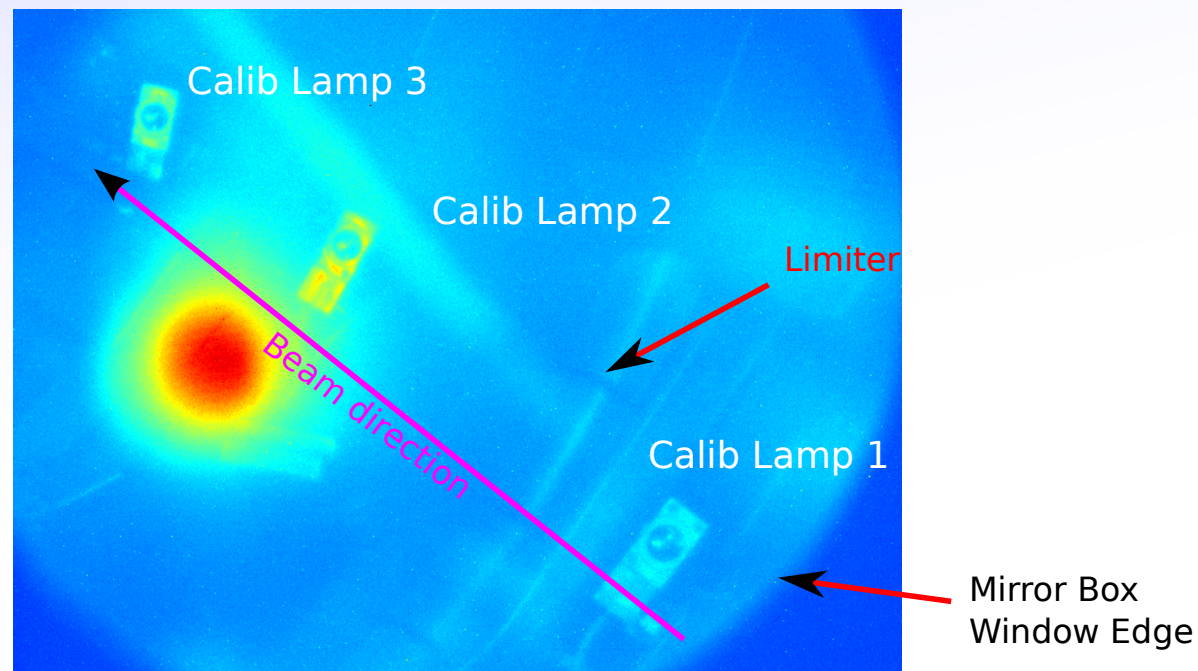


# Very very early results.

Wednesday night, fitting camera.  
No filter, big lamps in torus:



First image of beam emission.  
Thursday 24th Jan 2013, 08:55:06

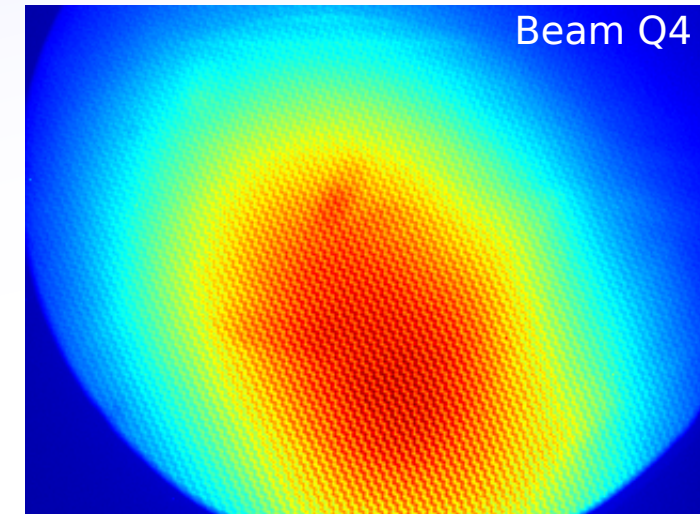
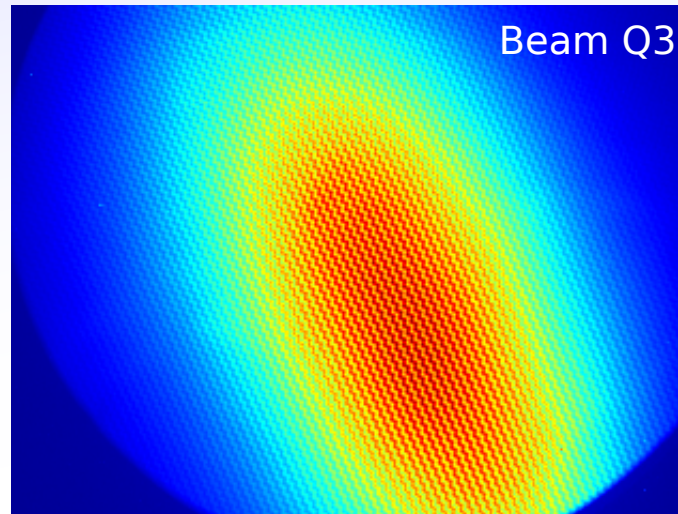
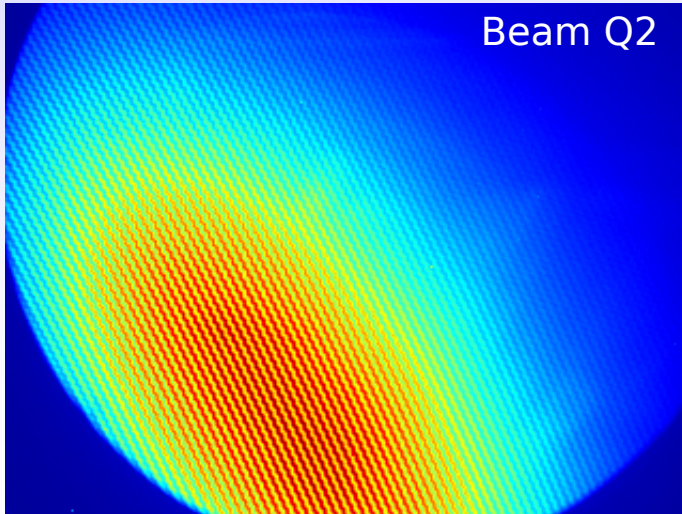
Guessed at 50ms exposure, which was too much.

For 2.5MW beam source 3, require 2-10ms exposure.

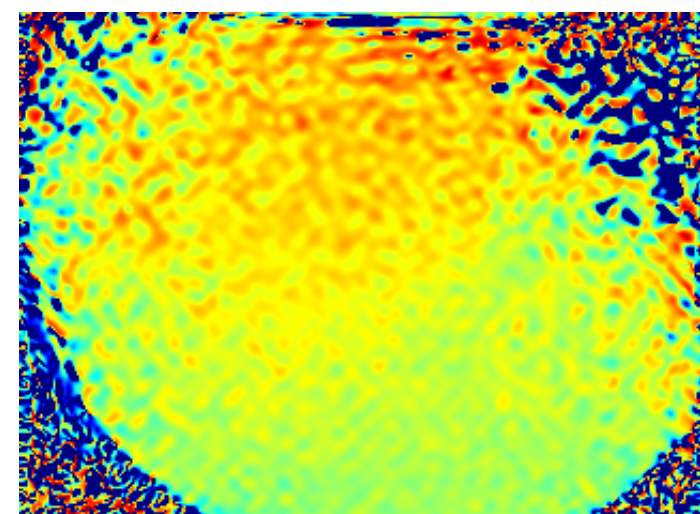
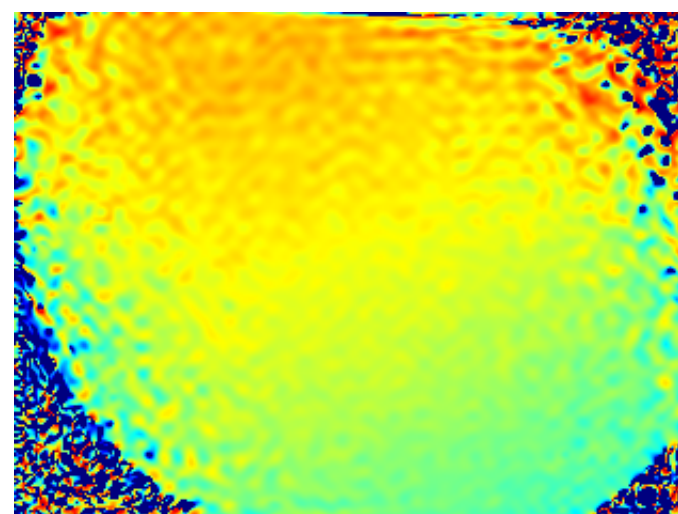
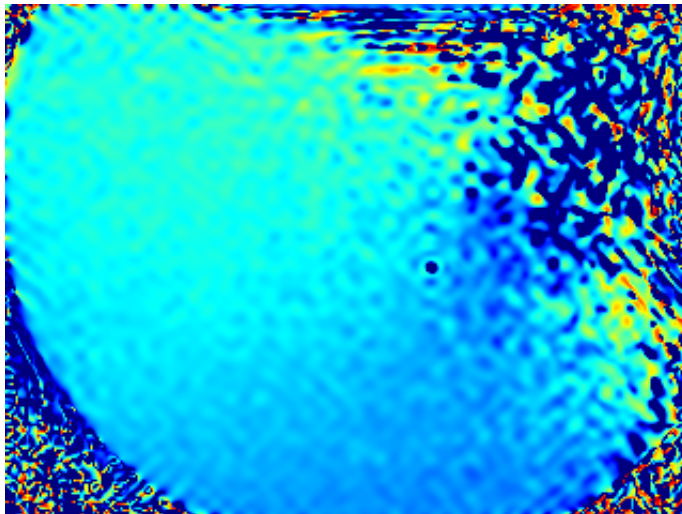
Up to 30ms in low-density, lower power/voltage.

# Very very early results (Today)

Different beams, all seem to work, but give different angles (as expected).



~Polarisation angle:





# Very very early results (Yesterday)

Q2 (beam source 2) and mostly Q3 fired during current ramp, and H-mode on first plasma day. Looks interesting, but I haven't begun to think whether it's sensible or not.

