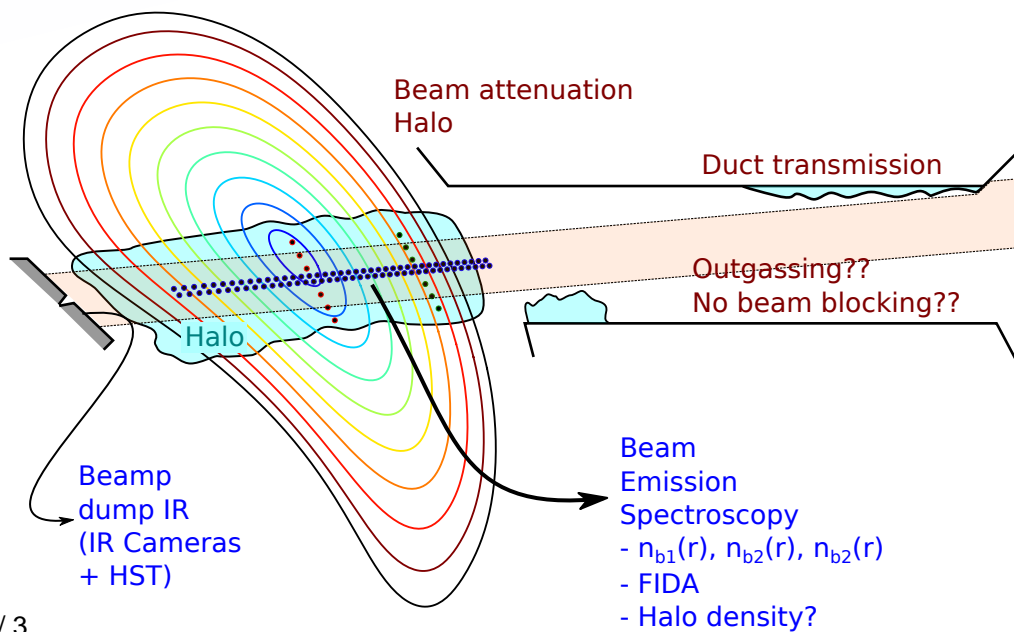
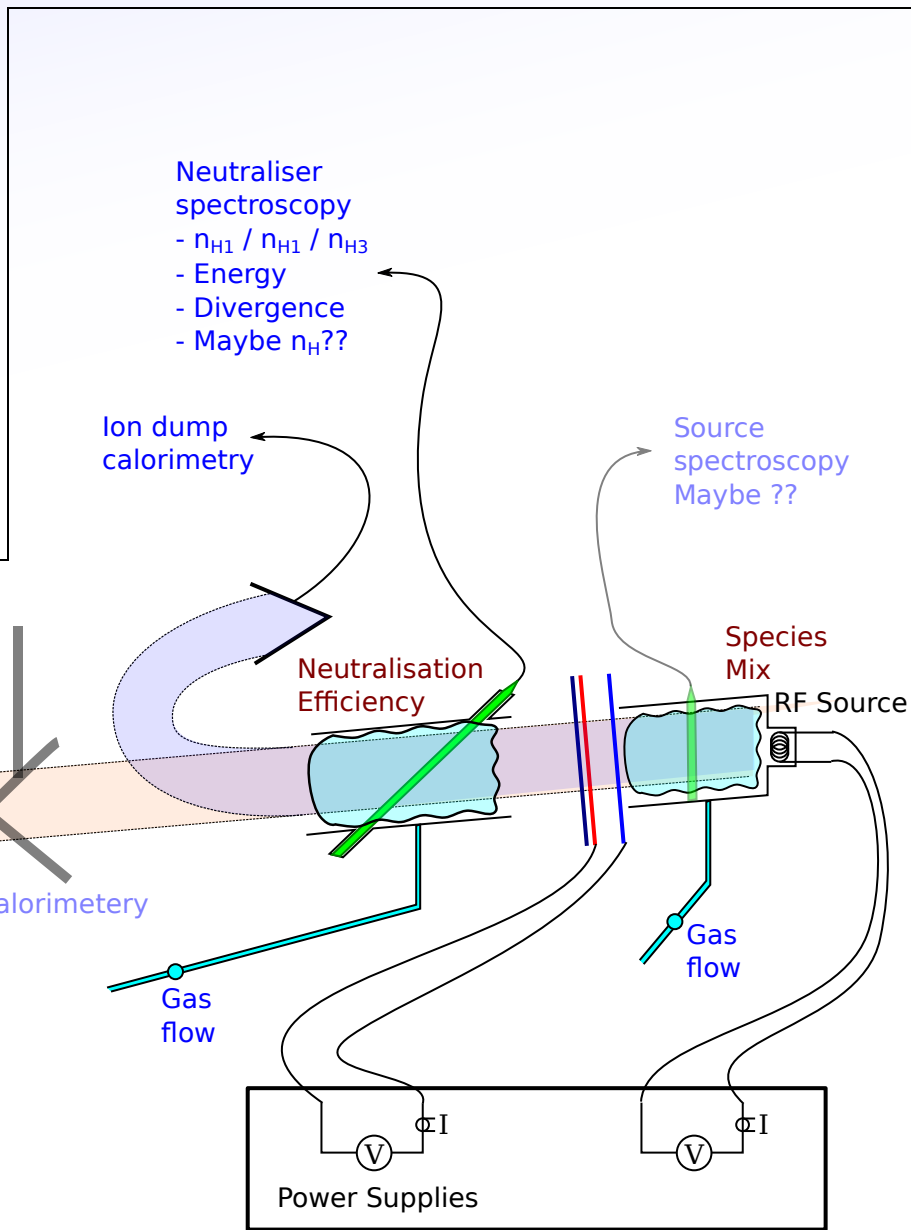
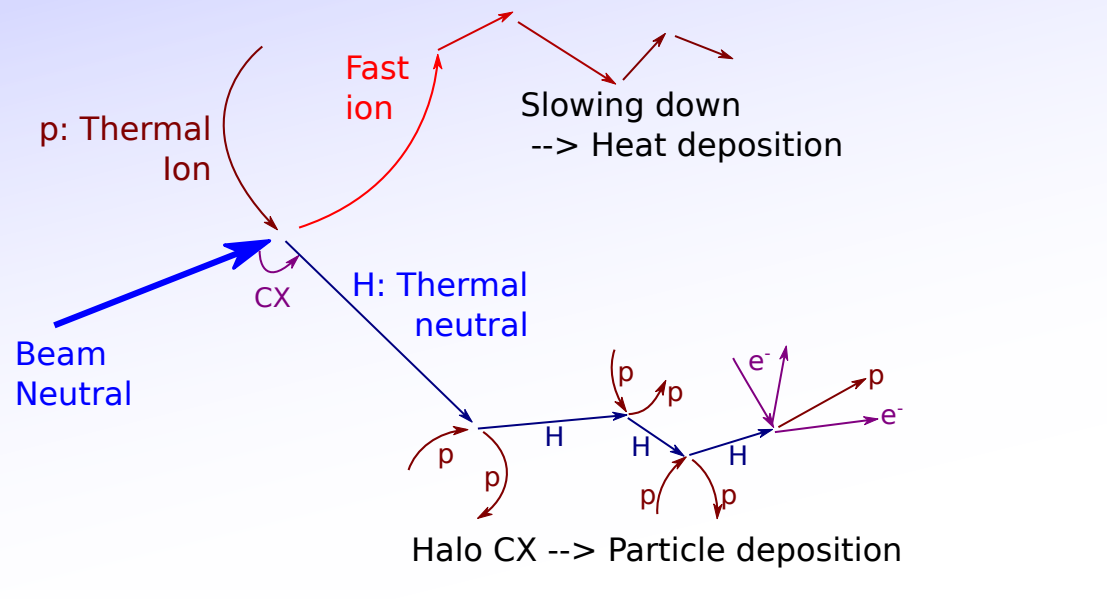


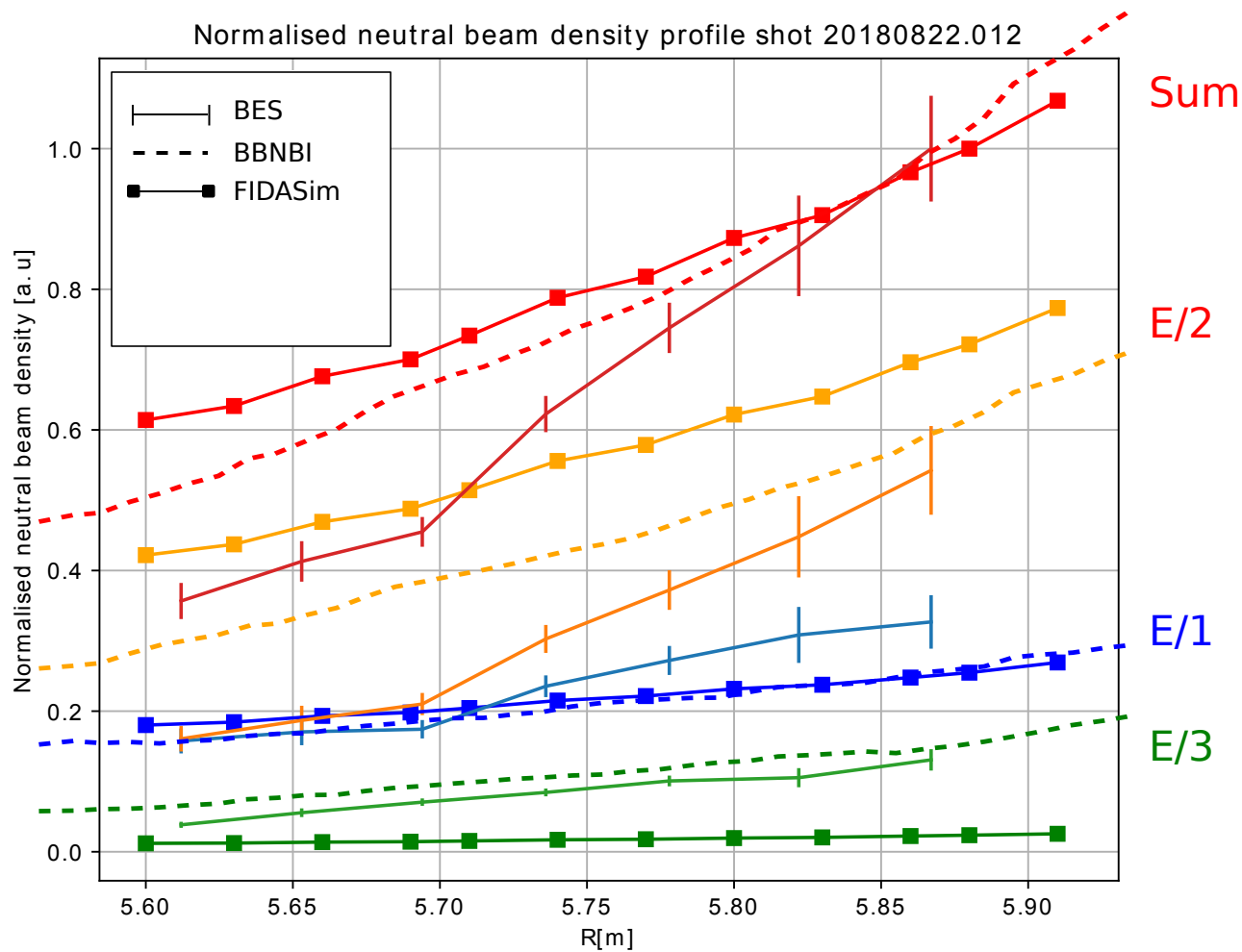
# NBI Modelling and validation with BES



# Beam attenuation/fuelling (T.W.C.Neelis)

Very preliminary comparison of beam attention.

- 1) Measured (BES)
- 2) BBNBI (Ascot)
- 3) FIDASim#



# Beam deposition (T.W.C.Neelis)

Measured beam deposition (ignoring Halo CX broadening) may partly explain central peaking:

