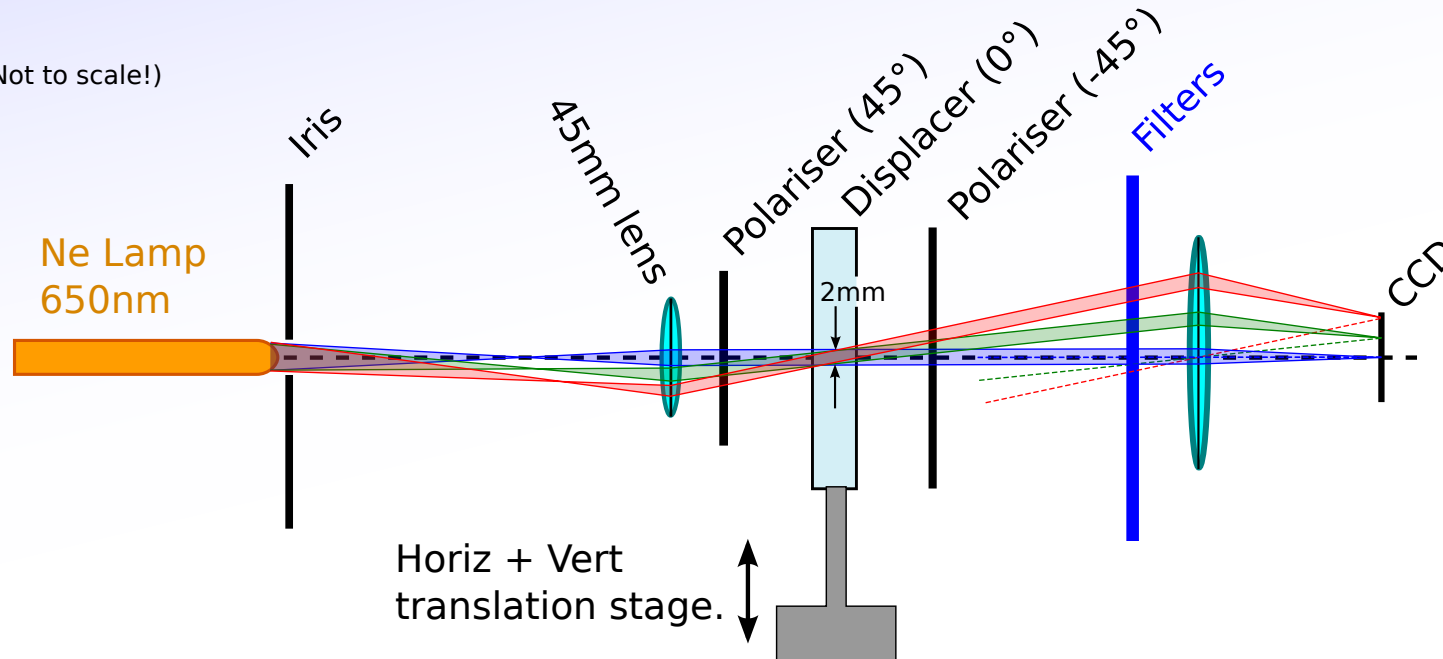


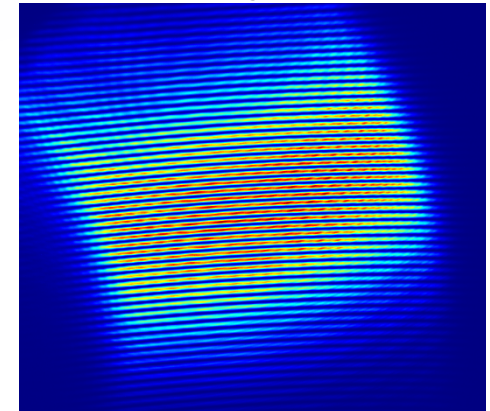
Interference imaging within a 2mm dot.

The optical system is setup with the camera lens focused at infinity onto CCD.
Each CCD position corresponds to particular AOI through the plates.
The phase shift in the displacer changes with AOI and creates an interference pattern on the CCD.

(Not to scale!)



CCD Image:



The Ne lamp is focused by the first lens onto a small point on the crystal. This is NOT focused onto the CCD.

