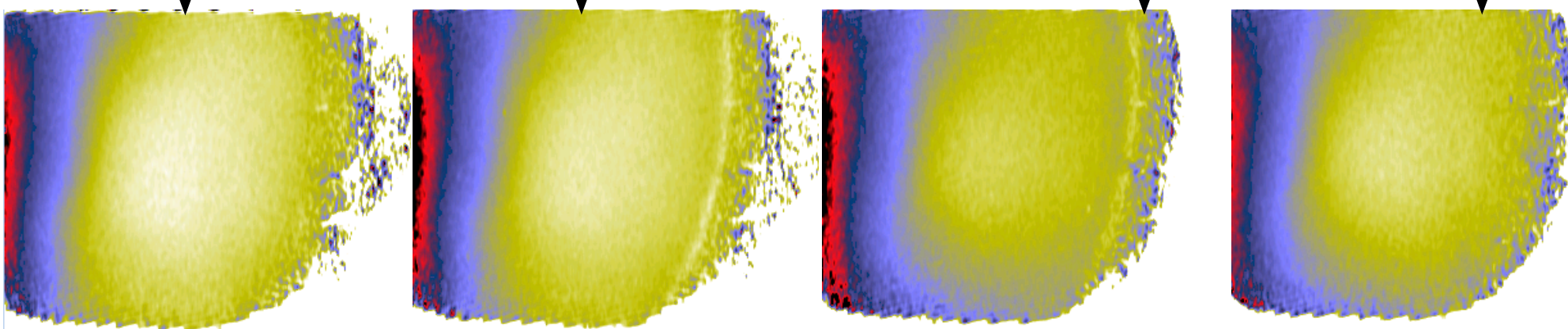
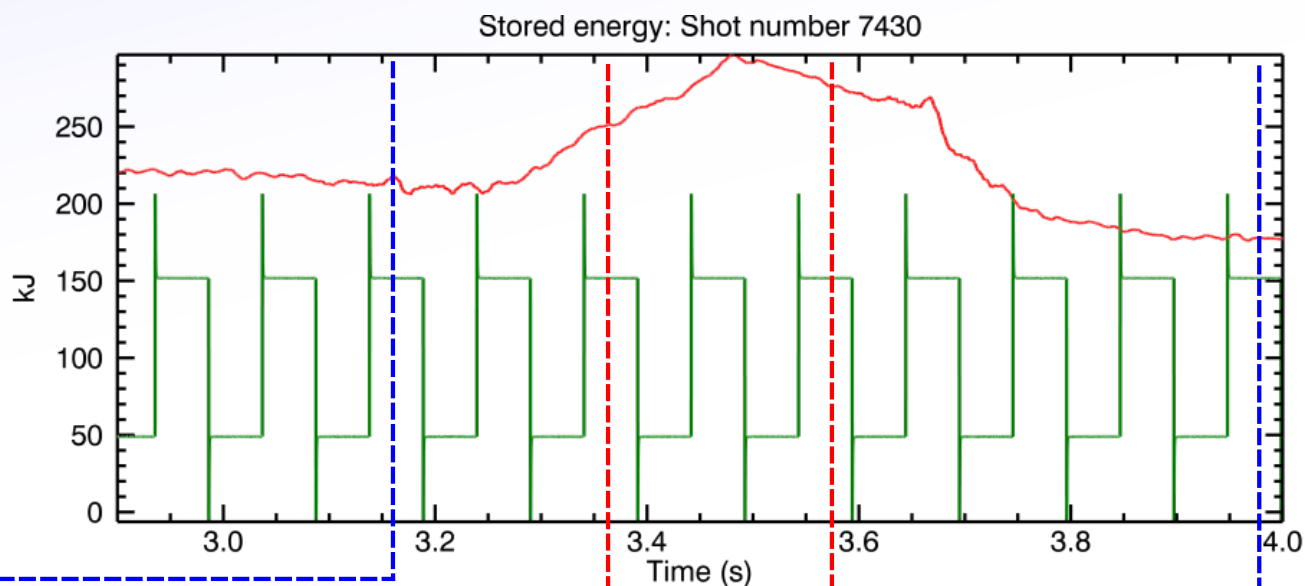
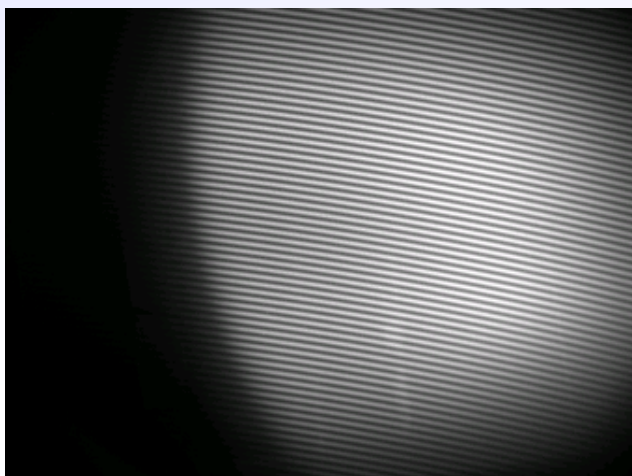


Some promising results from K-STAR

The $\lambda/4$ Ferro-Liquid Crystal (FLC) gives many extra options, including measurement of the polarisation angle without the 2nd displacer plate, so only 1 set of fringes.

This gives much better spatial resolution in 1 direction and is how John Howard currently has the K-STAR IMSE system setup:



Angles are not yet calibrated, but H-mode pedestal is already clearly visible, and is probably a direct effect of the the pedestal current.